



ENVY





 MARCA



 MARCA

# Lead where others follow

ENVYRESIDENCES.COM

## VISIONARY DEVELOPER DECO COMMUNITIES HAS CREATED 89 WORLD-CLASS RESIDENCES THAT ARE AS OPULENT AS THE ADDRESSES' FIVE-STAR AMENITIES

### Exclusive Designer Building

- 8 story building designed to maximize views
- Concrete construction throughout with floor to ceiling glazing elements
- Interior design by award-winning Private Label International, 3 color schemes: Mysterious, Bold and Intuitive
- Exterior design by award-winning architect, Daniel Gehmann, of Harley Ellis Devereaux, Los Angeles
- Thoughtfully designed floor plans to maximize available floor area and outdoor living
- Oversized balconies, sliding door entries, double balconies in select floor plans
- Natural gas outlets on balconies

### Building Amenities

- Lucas James designed fitness center, with state-of-the-art cardio equipment, stretching areas, outdoor "Zen" garden, TRX station and fitness lounge
- Specialty impact designed weight room flooring
- On-site personal training available by Lucas James and access to on-site personal and group training
- Live the ENVY life in the ENVY Black Label Lounge, featuring oversized fireplace, designer styling, Wifi access, wet bar, TV and wine storage
- High speed Wifi access in all common areas
- Pool on second floor, spa, outdoor lounge area, community BBQ's, private cabanas
- Secure temperature controlled wine storage lockers for ENVY residents

### Energy Efficiency & Sustainable Design

- Natural gas cooktop
- Integrated high performance exterior window system UV coating
- Low VOC paint
- Recycling drawers in kitchen cabinets
- EV charging station on-site
- Low flow toilets
- Energy Star™ appliances
- 14 SEER HVAC units
- Energy efficient lighting design

### Technology & Convenience

- Pre-wired for easy access to latest in wireless, home security, voice, data and entertainment
- COX highest speed Internet
- Interior fire protection sprinkler system

### Security & Privacy

- Solid core front entry doors
- Secure elevator access with limited entry per floor
- 24/7 on-site concierge or security
- Gated underground parking garage for all unites (1 stall per bedroom)
- Secure underground bike storage rooms with bicycle repair bench and tools
- Warranty - 2 years on workmanship, materials and 10 years on major systems and building envelope
- Professionally managed by one of Phoenix's premier management companies, City Property Management
- Individual Honeywell security system with touch screen control pad

# features



ENVY



Features and ceiling heights may vary based on individual floor plans. In a continuing effort to meet changing conditions, DS Deco Envy, LLC reserves the right to make changes or modify features and amenities, specifications and/or prices without notice or obligation. Renderings and animations are artist's illustrations only, and are subject to change. Phoenix Urban Spaces is the exclusive Residential Broker for Envy. No offer to sell or lease can be made and no offer to purchase or lease can be accepted prior to issuance of Arizona Subdivision Public Report.

deco  
COMMUNITIES

# Lead where others follow

ENVYRESIDENCES.COM

## BE YOUR OWN TASTEMAKER

### Experiential Interiors

- Interior design exclusively by Private Label International, including 3 key designer compositions: **Bold, Intuitive** and **Mysterious**
- Oversized balconies
- 9' ceiling heights
- 8' high solid core entry door
- Loft-style sliding doors (per plan)
- Designer dining room lighting
- Wide plank hardwood flooring
- 5 ¼" high chamfer baseboard
- Hand-trowelled drywall finish on walls and ceilings
- Large walk-in closets in all master bedrooms

### Resplendent Kitchens

- Contemporary-styled kitchen featuring high-gloss cabinets with soft close mechanisms and fully adjustable shelves
- Gourmet Bosch "Energy Star" appliance package:
  - 4-burner stainless steel gas cook-top
  - Designer stainless steel "disappearing" hood
  - Stainless steel full-size self-cleaning oven
  - Sensor cooking multi-function microwave oven
  - Stainless steel "Quietest" multi-cycle dishwasher
  - Full-size side by side stainless steel refrigerator, with water/ice dispenser system
- Polished solid quartz countertops with eased edge
- Chef style double-bowl under mount stainless steel kitchen sink
- Moen stainless steel designer series kitchen faucet with pullout spray
- Full height built-in pantry cupboard (per plan)
- Recycling and trash drawers in kitchen
- Designer tile backsplash

### Sumptuous Bathrooms

- Contemporary hotel-styled floating bath cabinets with high-gloss finish
- Polished solid quartz countertops with eased edge
- Moen 90 Degree™ designer series plumbing fixtures
- Under mount double sinks in master bath
- Kohler elongated low-flow toilet
- Frameless glass shower doors in master bath
- Floating backlit oversized vanity mirror
- Matching bath accessories
- Designer dimensional tile flooring and surrounds

### Premium Options

- Selection of designer flooring, countertops, cabinets, and fixtures options, curated exclusively for ENVY by Private Label International
- Dacor, Thermador, Viking, Wolf, and Sub-Zero appliance package
- Built-in wine refrigerator and espresso maker
- Under-sink water filtration system
- Custom closet systems (per plan)
- Fireplaces (per plan)
- Lutron or equivalent lighting control system

# finishes



ENVY



Features and ceiling heights may vary based on individual floor plans. In a continuing effort to meet changing conditions, DS Deco Envy, LLC reserves the right to make changes or modify features and amenities, specifications and/or prices without notice or obligation. Renderings and animations are artist's illustrations only, and are subject to change. Phoenix Urban Spaces is the exclusive Residential Broker for Envy. No offer to sell or lease can be made and no offer to purchase or lease can be accepted prior to issuance of Arizona Subdivision Public Report.

deco  
COMMUNITIES

# Lead where others follow

ENVYRESIDENCES.COM

## ENJOY THE “SUPER-PRIME” BENEFITS AVAILABLE ONLY TO ENVY OWNERS

**PINNACLE AVIATION** 



### Jet Hours

ENVY's private jet partner, **Pinnacle Aviation**, is providing **2 complimentary private jet hours** to every ENVY owner. Enjoy Pinnacle's "higher level" service, and take yourself and up to 3 friends on a private charter flight from Scottsdale Airpark to San Diego, Las Vegas, Palm Springs or other destinations.

Pinnacle Aviation's powerful aviation network, world-class facility, and impeccable safety record make them a top choice for exclusive jet travel.

\* Subject to availability. Complimentary hours based on Light Jet usage. Additional fees may apply.

### Personal Training

Phoenix's #1 rated fitness professional and celebrity trainer, **Lucas James**, has partnered with ENVY and will provide exclusive on-site **complimentary fitness evaluation** and **3 training hours** to every ENVY owner.

Enjoy on-site personal and group training sessions designed and presented exclusively by Lucas James.

### Preferred Access

ENVY Owners will enjoy VIP access and preferred seating at dozens of Scottsdale's top entertainment, nightlife and restaurant destinations. Slip past the line, always get a reservation and be guaranteed the best table in the house.

The ENVY VIP CARD is the preferred access card at Sushi Roku, Citizen Public House, CAKE, The Mint, Maya Day + Nightclub among other area hotspots.

### Private Entertaining

The on-site ENVY Black Label Lounge will provide a private club experience for ENVY owners and their guests. Available for private entertaining, the ENVY Black Label Lounge can accommodate up to 50 guests in a sumptuous lounge setting, with flat screen TV's, wine storage, Wifi, caterer's kitchen and designer furnishings.

Entertain your guests on-site, before heading out to enjoy Scottsdale's nightlife, restaurant and arts scene. Or bypass the scene entirely and enjoy Scottsdale's most exclusive nightlife space just steps from your front door.

# benefits

  
**ENVY**

Features and ceiling heights may vary based on individual floor plans. In a continuing effort to meet changing conditions, DS Deco Envy, LLC reserves the right to make changes or modify features and amenities, specifications and/or prices without notice or obligation. Renderings and animations are artist's illustrations only, and are subject to change. Phoenix Urban Spaces is the exclusive Residential Broker for Envy. No offer to sell or lease can be made and no offer to purchase or lease can be accepted prior to issuance of Arizona Subdivision Public Report.

**deco**  
COMMUNITIES

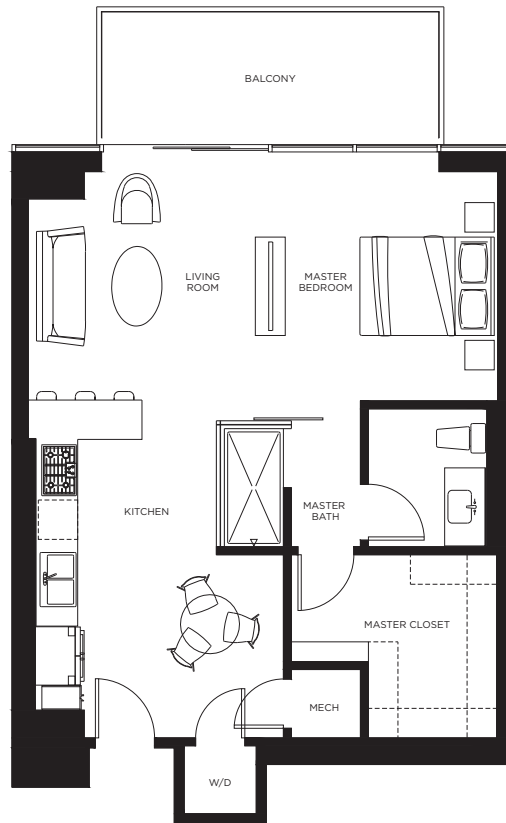
# Envy Residences

## Available Floor Plans

Floor Plan	Sq. Ft.	Bed/Bath	Starting Price
Covet	767	1 Bed/1 Bath	\$352,900
Crave	942	1 Bed/1 Bath	\$452,900
Thrill	1,106	1 Bed/Study/1.5 Bath	\$526,900
Escape	1,224	2 Bed/Study/2 Bath	\$573,900
Inspire	1,129	2 Bed/2 Bath	\$536,900
Allure	1,292	2 Bed/2 Bath	\$604,900
Indulge	1,202	2 Bed/2 Bath	\$568,900
Impress	1,268	2 Bed/2 Bath	\$578,900
Entice	1,177	2 Bed/2 Bath	\$603,900
Amaze	1,077	2 Bed/2 Bath	\$613,900

# Lead where others follow

ENVYRESIDENCES.COM



Level 2



Level 3



Levels 4-7

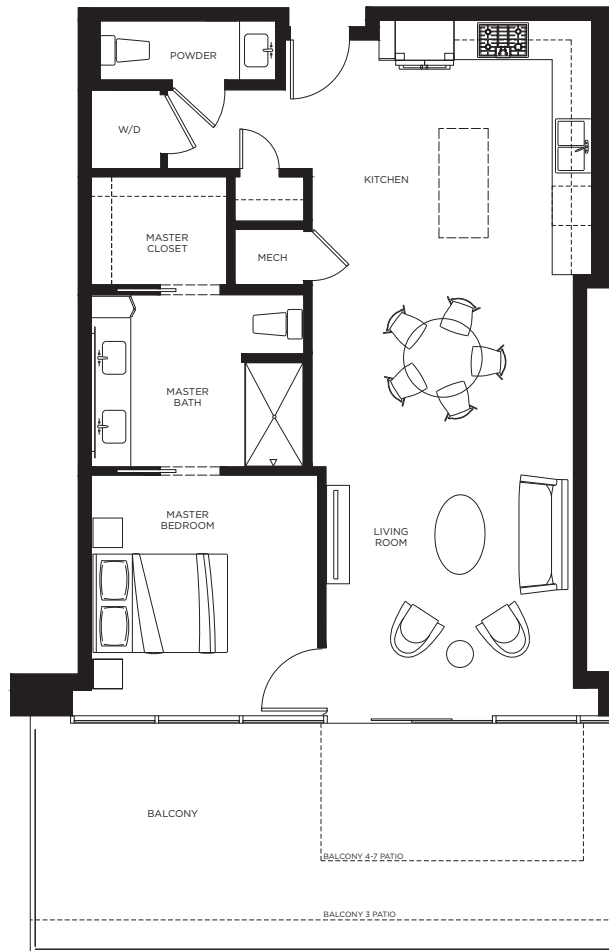
# covet

**1 Bed / 1 Bath**  
776 sq. ft.  
+ 129 sq. ft. balcony

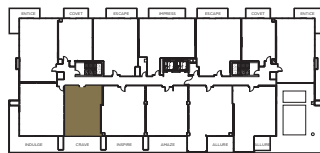
ENVY

# Lead where others follow

ENVYRESIDENCES.COM



Level 2



Level 3



Levels 4-7

# Crave

**1 Bed / 1.5 Bath**

941 sq. ft.

+ 300 sq. ft. balcony (Levels 2-3)

+ 99 sq. ft. balcony (Levels 4-7)

ENVY

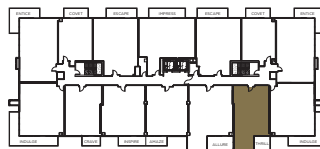
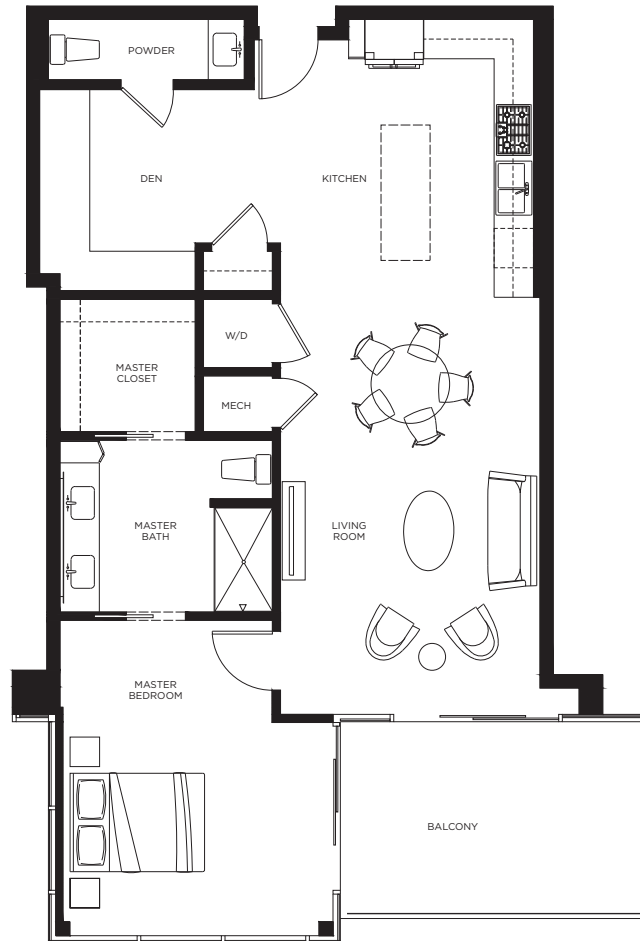


This is not an offer to sell, or solicitation of offers to buy, the property in states where such an offer of solicitation cannot be made. Sales by Phoenix Urban Spaces, LLC, Roberta Candelaria, Broker.

deco  
COMMUNITIES

# Lead where others follow

ENVYRESIDENCES.COM



Levels 4-7

# Thrill

**1 Bed / 1.5 Bath / Den**

1,108 sq. ft.

+ 157 sq. ft. balcony (Levels 4-7)

  
**ENVY**

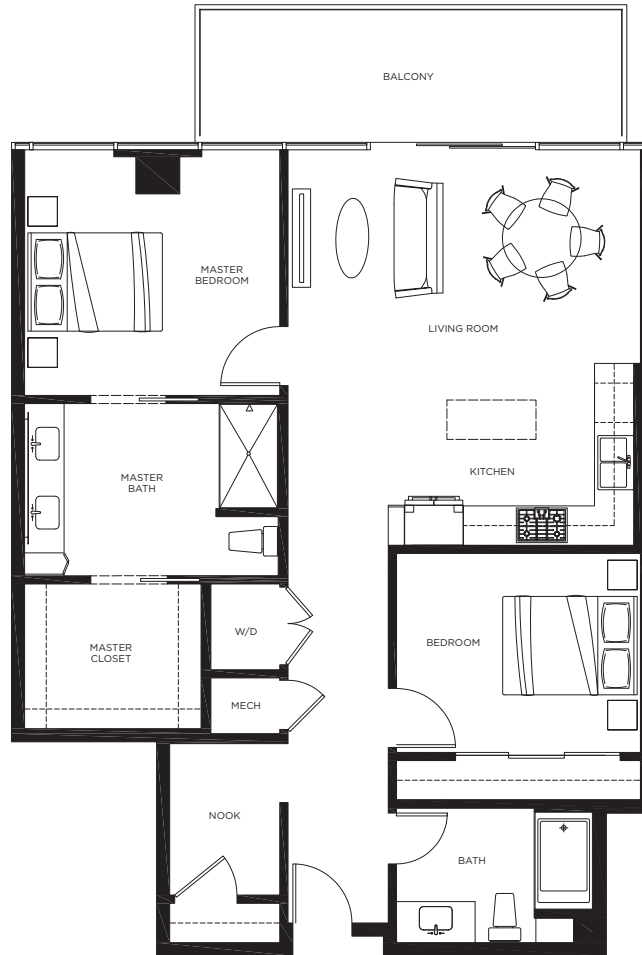


This is not an offer to sell, or solicitation of offers to buy, the property in states where such an offer of solicitation cannot be made. Sales by Phoenix Urban Spaces, LLC, Roberta Candelaria, Broker.

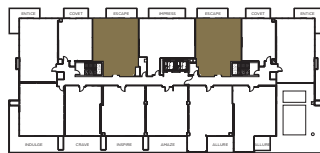
deco  
COMMUNITIES

# Lead where others follow

ENVYRESIDENCES.COM



Level 2



Level 3



Levels 4-7

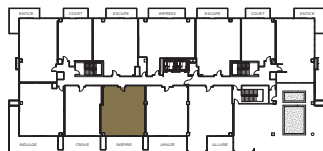
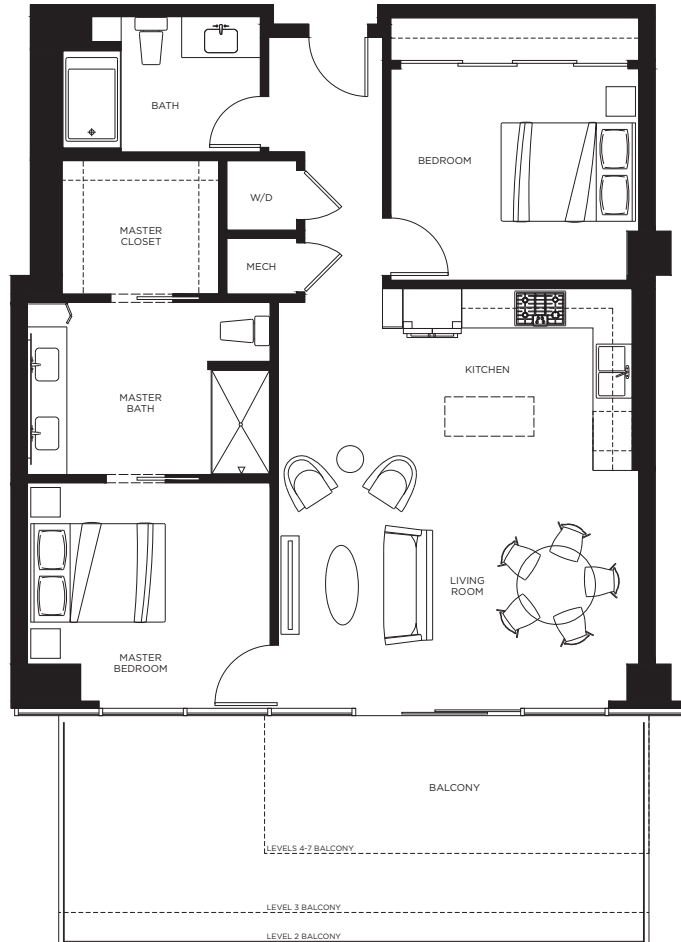
# escape

**2 Bed / 2 Bath / Nook**  
1, 213 sq. ft.  
+ 160 sq. ft. balcony

ENVY

# Lead where others follow

ENVYRESIDENCES.COM



Level 2



Level 3



Levels 4-7

# inspire

**2 Bed / 2 Bath**

1,126 sq. ft.

+ 300 sq. ft. balcony (Levels 2-3)

+ 140 sq. ft. balcony (Levels 4-7)

ENVY

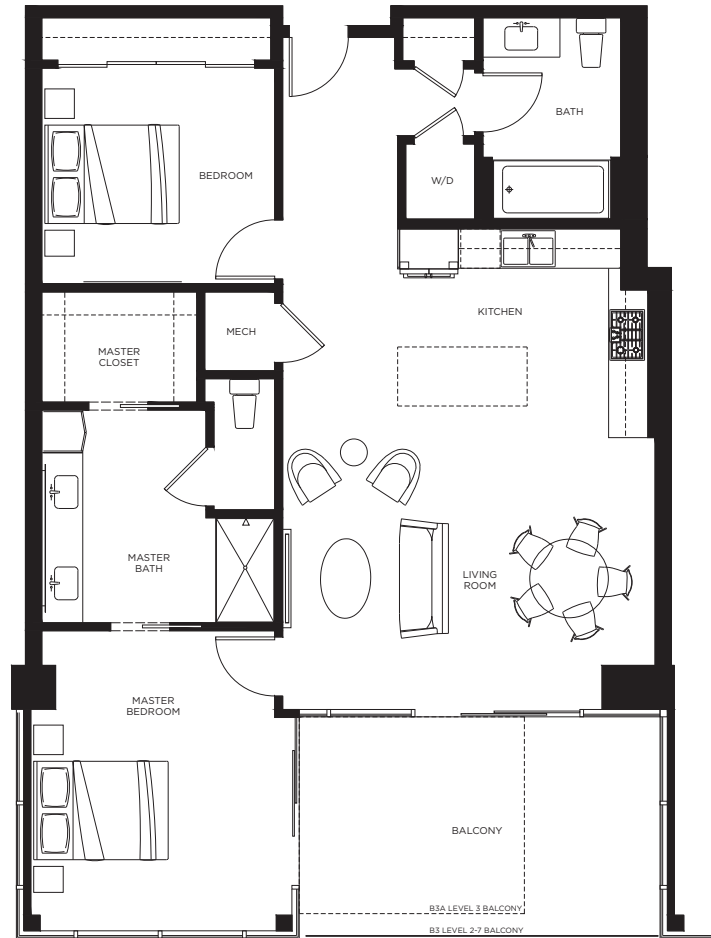


This is not an offer to sell, or solicitation of offers to buy, the property in states where such an offer of solicitation cannot be made. Sales by Phoenix Urban Spaces, LLC, Roberta Candelaria, Broker.

deco  
COMMUNITIES

# Lead where others follow

ENVYRESIDENCES.COM



Level 2



Level 3  
B3A\*



Levels 4-7

*allure*

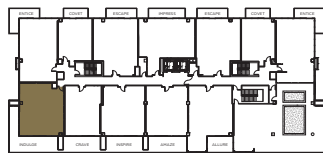
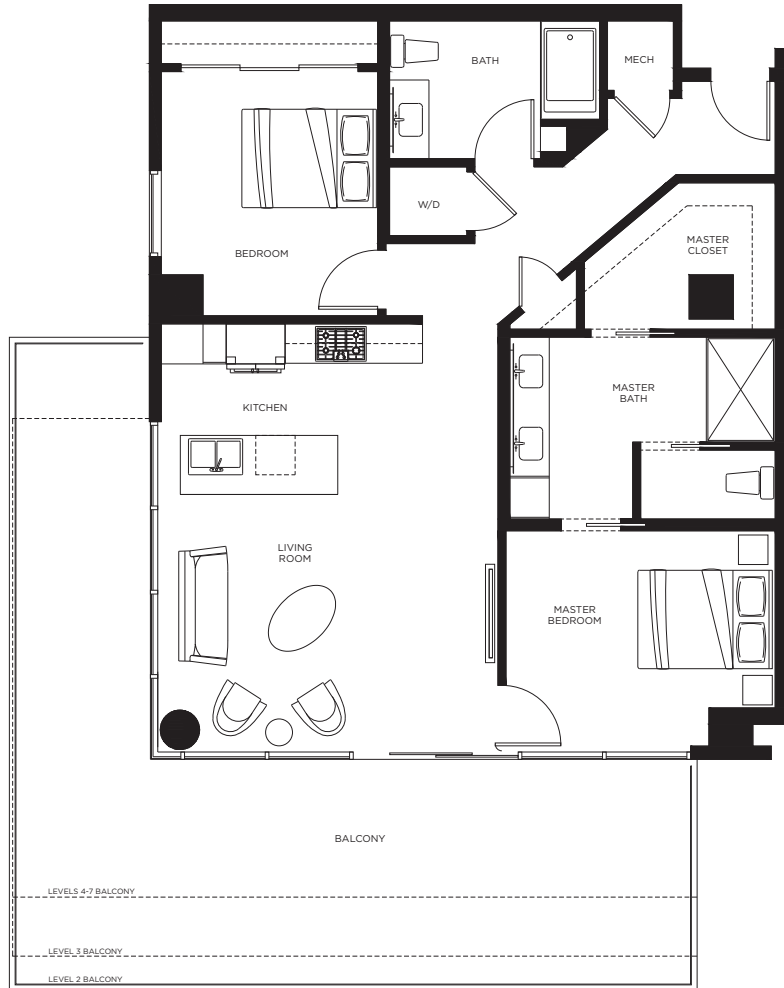
**2 Bed / 2 Bath (B3)**  
1, 289 sq. ft.  
+ 212 sq. ft. balcony  
(Levels 2-7)

**2 Bed / 2 Bath (B3A)\***  
1, 289 sq. ft.  
+ 158 sq. ft. balcony  
(Level 3)

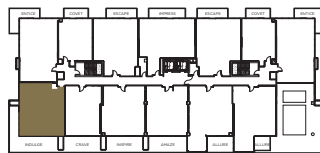
  
**ENVY**

# Lead where others follow

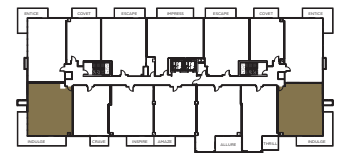
ENVYRESIDENCES.COM



Level 2



Level 3



Levels 4-7

# indulge

**2 Bed / 2 Bath**

1,200 sq. ft.

+ 484 sq. ft. balcony (Levels 2-3)

+ 303 sq. ft. balcony (Levels 4-7)

**ENVY**

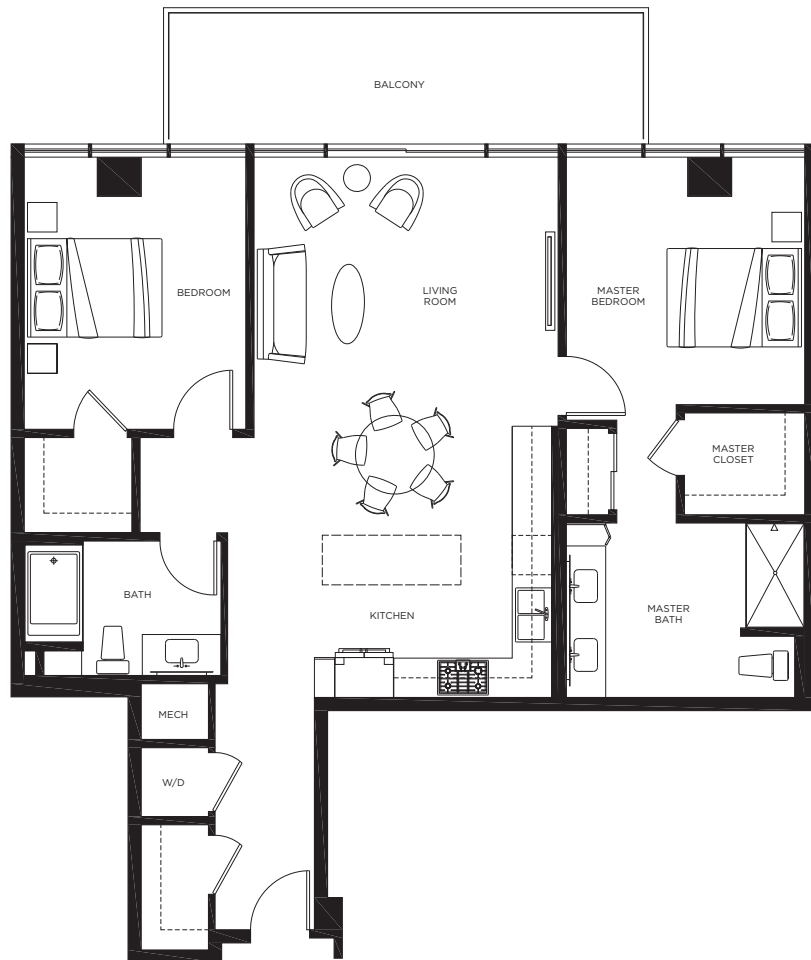


This is not an offer to sell, or solicitation of offers to buy, the property in states where such an offer of solicitation cannot be made. Sales by Phoenix Urban Spaces, LLC, Roberta Candelaria, Broker.

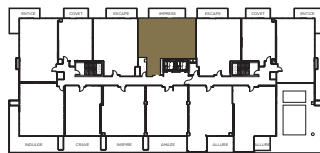
**deco**  
COMMUNITIES

# Lead where others follow

ENVYRESIDENCES.COM



Level 2



Level 3



Levels 4-7

# impress

**2 Bed / 2 Bath**

1,256 sq. ft.

+ 190 sq. ft. balcony

ENVY

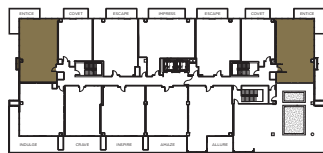
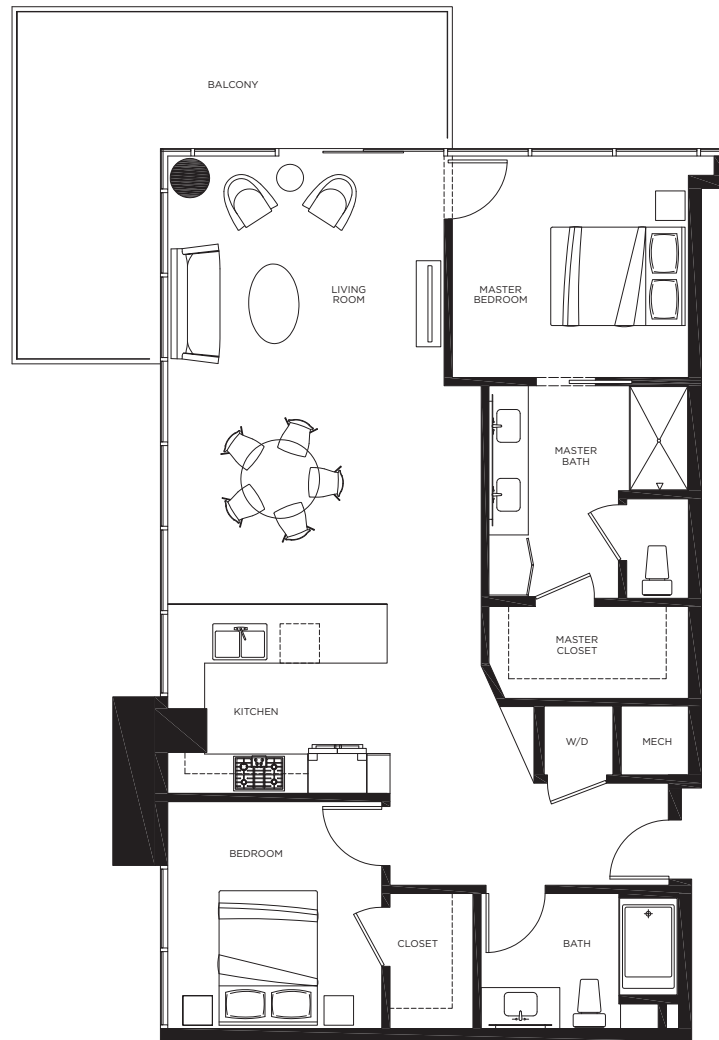


This is not an offer to sell, or solicitation of offers to buy, the property in states where such an offer of solicitation cannot be made. Sales by Phoenix Urban Spaces, LLC, Roberta Candelaria, Broker.

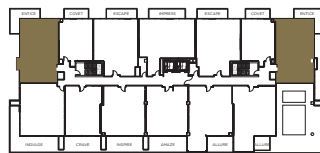
deco  
COMMUNITIES

# Lead where others follow

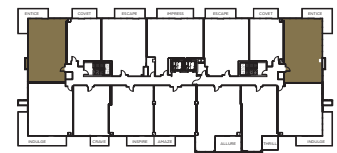
ENVYRESIDENCES.COM



Level 2



Level 3



Levels 4-7

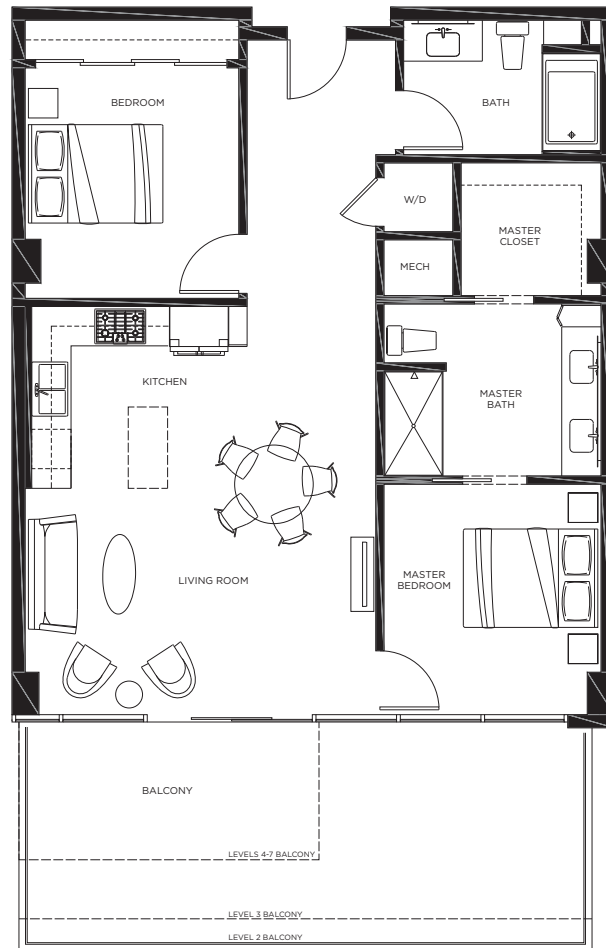
# entice

**2 Bed / 2 Bath**  
1,269 sq. ft.  
+ 223 sq. ft. balcony

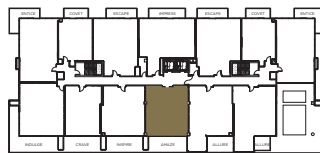
ENVY

# Lead where others follow

ENVYRESIDENCES.COM



Level 2



Level 3



Levels 4-7

# amaze

**2 Bed / 2 Bath**

1,074 sq. ft.

+ 291 sq. ft. balcony (Levels 2-3)

+ 110 sq. ft. balcony (Levels 4-7)

# ENVY

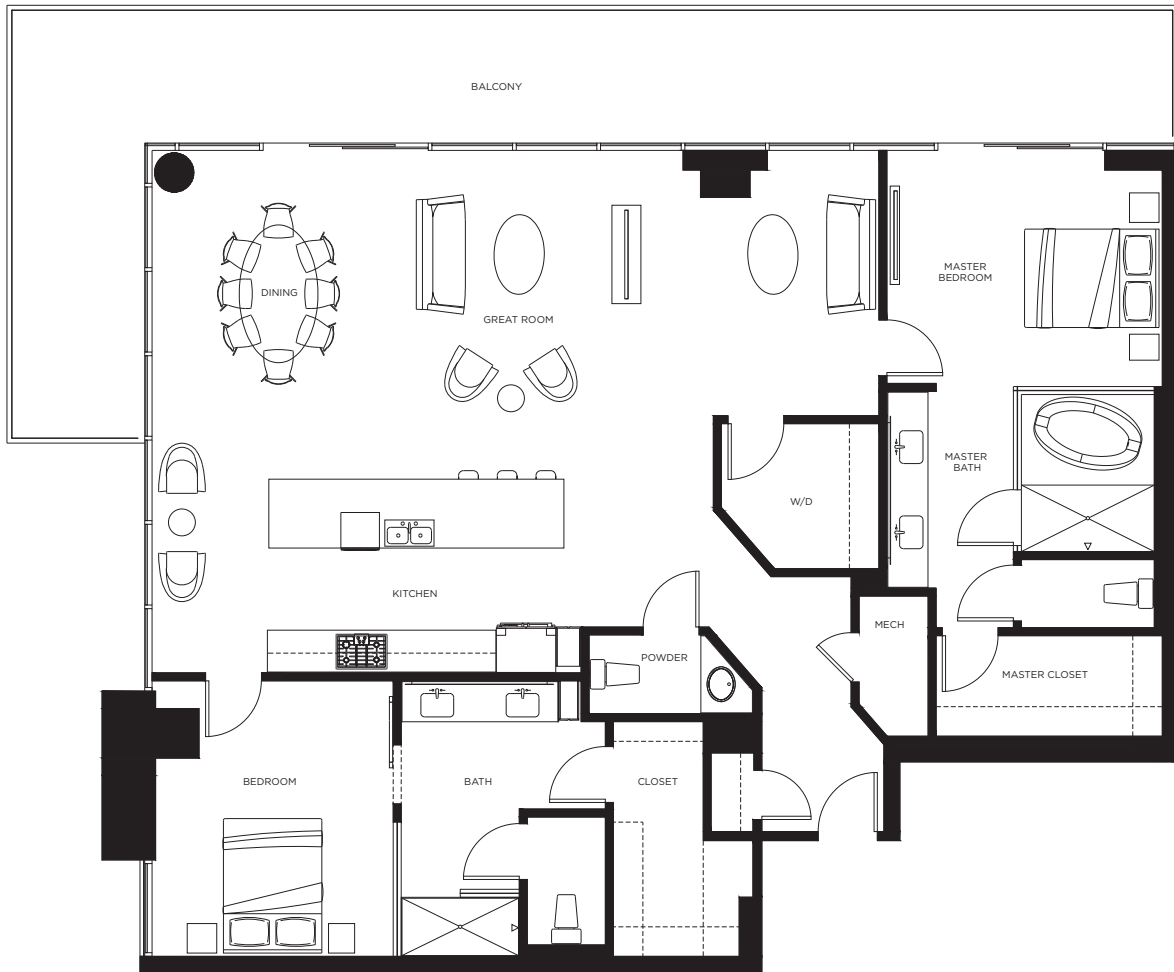


This is not an offer to sell, or solicitation of offers to buy, the property in states where such an offer of solicitation cannot be made. Sales by Phoenix Urban Spaces, LLC, Roberta Candelaria, Broker.

deco  
COMMUNITIES

# Lead where others follow

ENVYRESIDENCES.COM



Level 8

**ph ci**

**2 Bed / 2.5 Bath**  
1,995 sq. ft.  
+ 488 sq. ft. balcony

  
**ENVY**

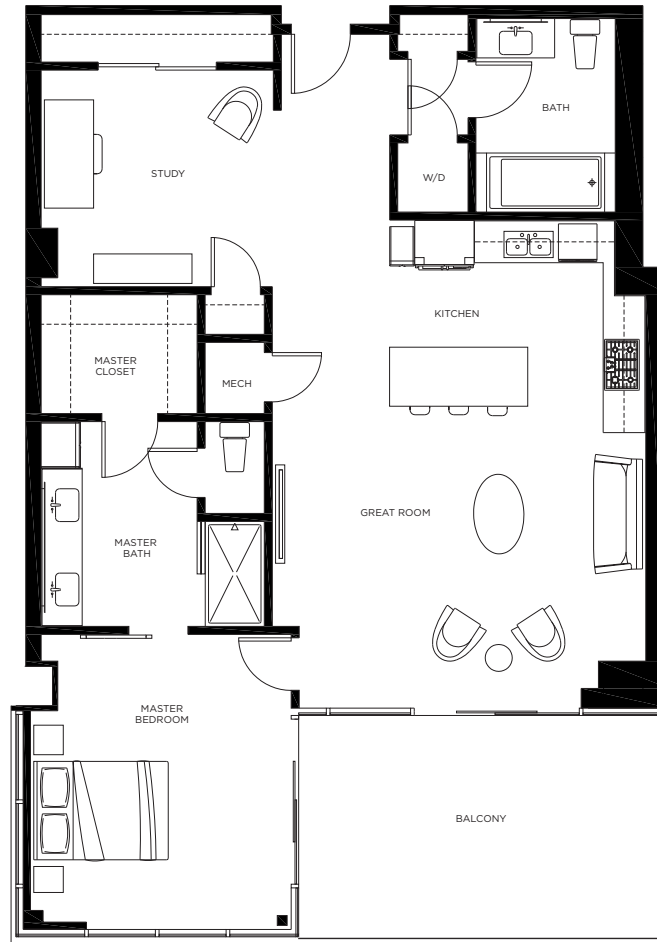


This is not an offer to sell, or solicitation of offers to buy, the property in states where such an offer of solicitation cannot be made. Sales by Phoenix Urban Spaces, LLC, Roberta Candelaria, Broker.

**deco**  
COMMUNITIES

# Lead where others follow

ENVYRESIDENCES.COM



Level 8

**ph c2**

**1 Bed / 2 Bath / Study**

1,288 sq. ft.

+ 212 sq. ft. balcony



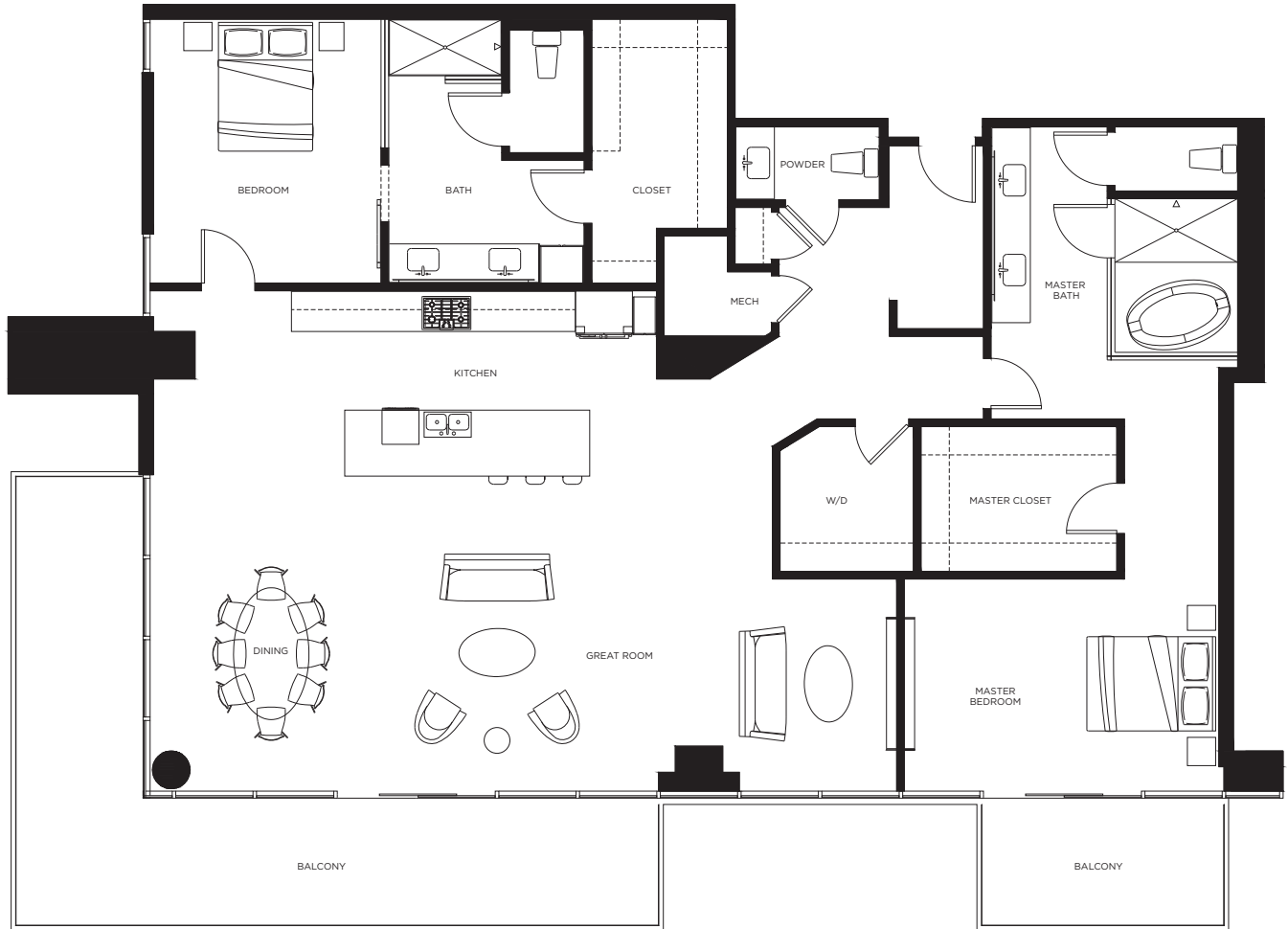


This is not an offer to sell, or solicitation of offers to buy, the property in states where such an offer of solicitation cannot be made. Sales by Phoenix Urban Spaces, LLC, Roberta Candelaria, Broker.

deco  
COMMUNITIES

# Lead where others follow

ENVYRESIDENCES.COM



Level 8

**ph c3**

**2 Bed / 2.5 Bath**

2,274 sq. ft.

+ 364 sq. ft. & 93 sq. ft. balconies

  
**ENVY**

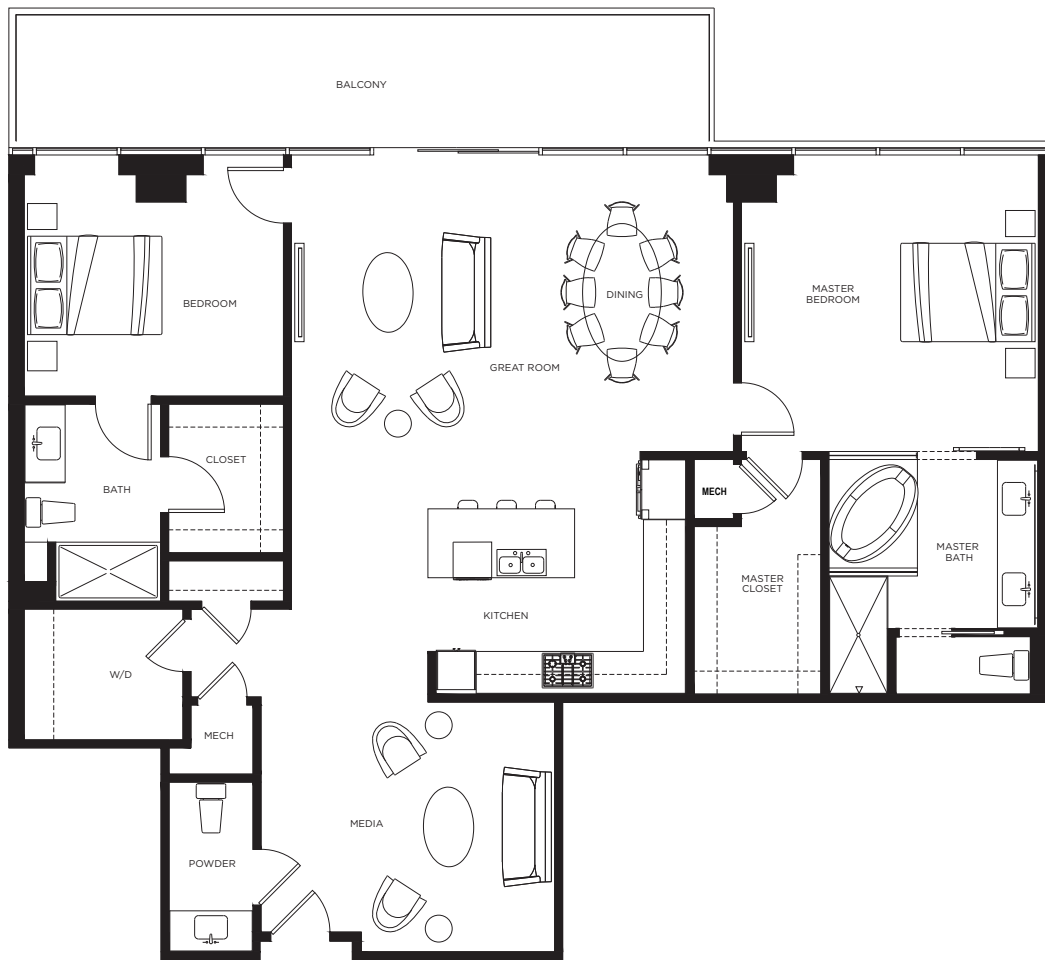


This is not an offer to sell, or solicitation of offers to buy, the property in states where such an offer of solicitation cannot be made. Sales by Phoenix Urban Spaces, LLC, Roberta Candelaria, Broker.

**deco**  
COMMUNITIES

# Lead where others follow

ENVYRESIDENCES.COM



Level 8

**ph c4**

**2 Bed / 2.5 Bath**  
1,764 sq. ft.  
+ 251 sq. ft. balcony

  
**ENVY**

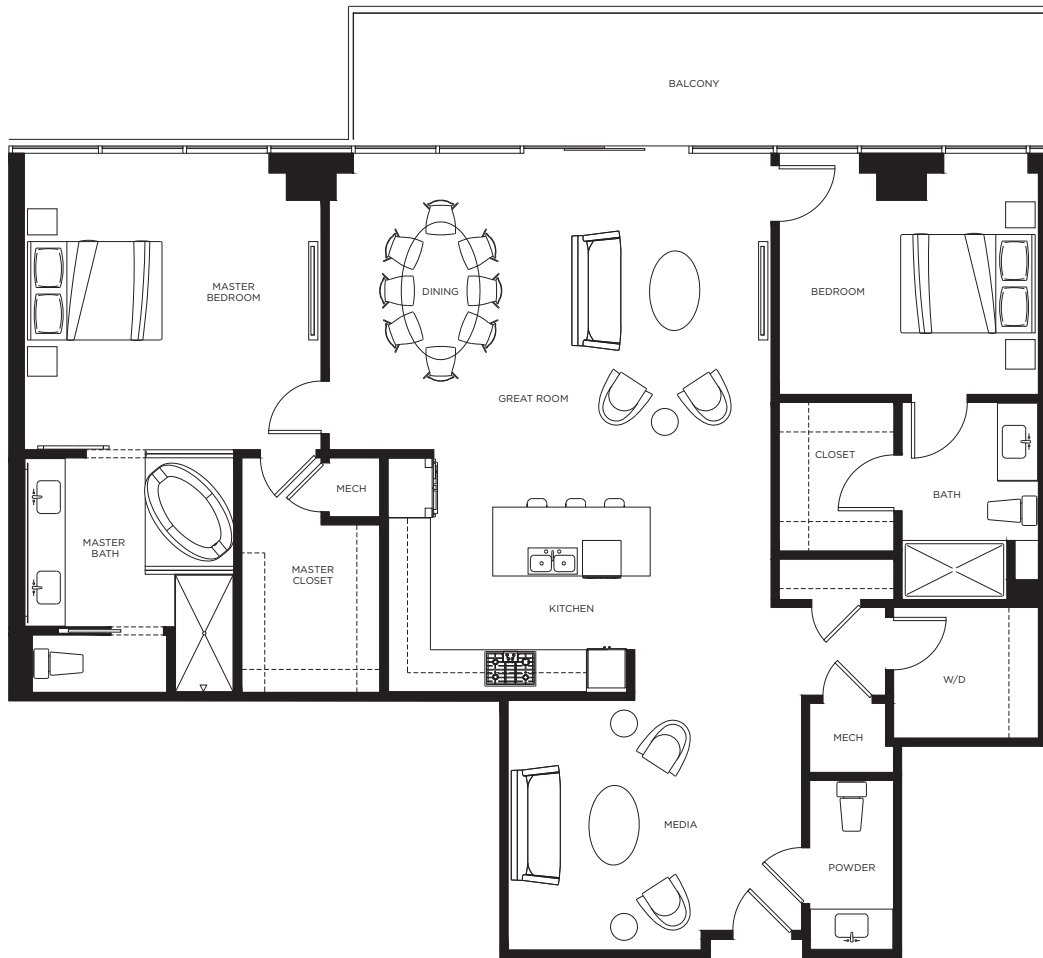


This is not an offer to sell, or solicitation of offers to buy, the property in states where such an offer of solicitation cannot be made. Sales by Phoenix Urban Spaces, LLC, Roberta Candelaria, Broker.

**deco**  
COMMUNITIES

# Lead where others follow

ENVYRESIDENCES.COM



Level 8

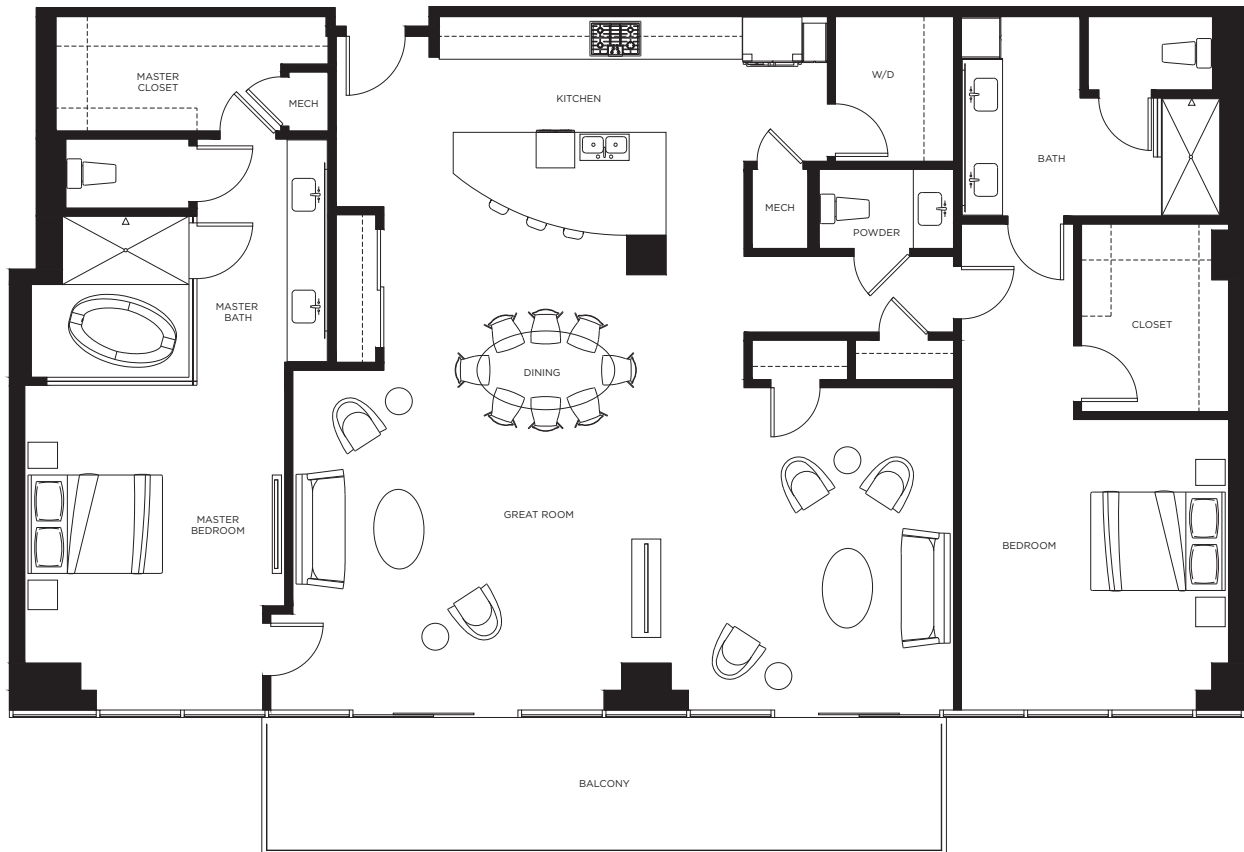
**ph c5**

**2 Bed / 2.5 Bath**  
1,770 sq. ft.  
+ 251 sq. ft. balcony

**ENVY**

# Lead where others follow

ENVYRESIDENCES.COM



Level 8

**ph c6**

**2 Bed / 2.5 Bath**  
2,208 sq. ft.  
+ 244 sq. ft. balcony

  
**ENVY**

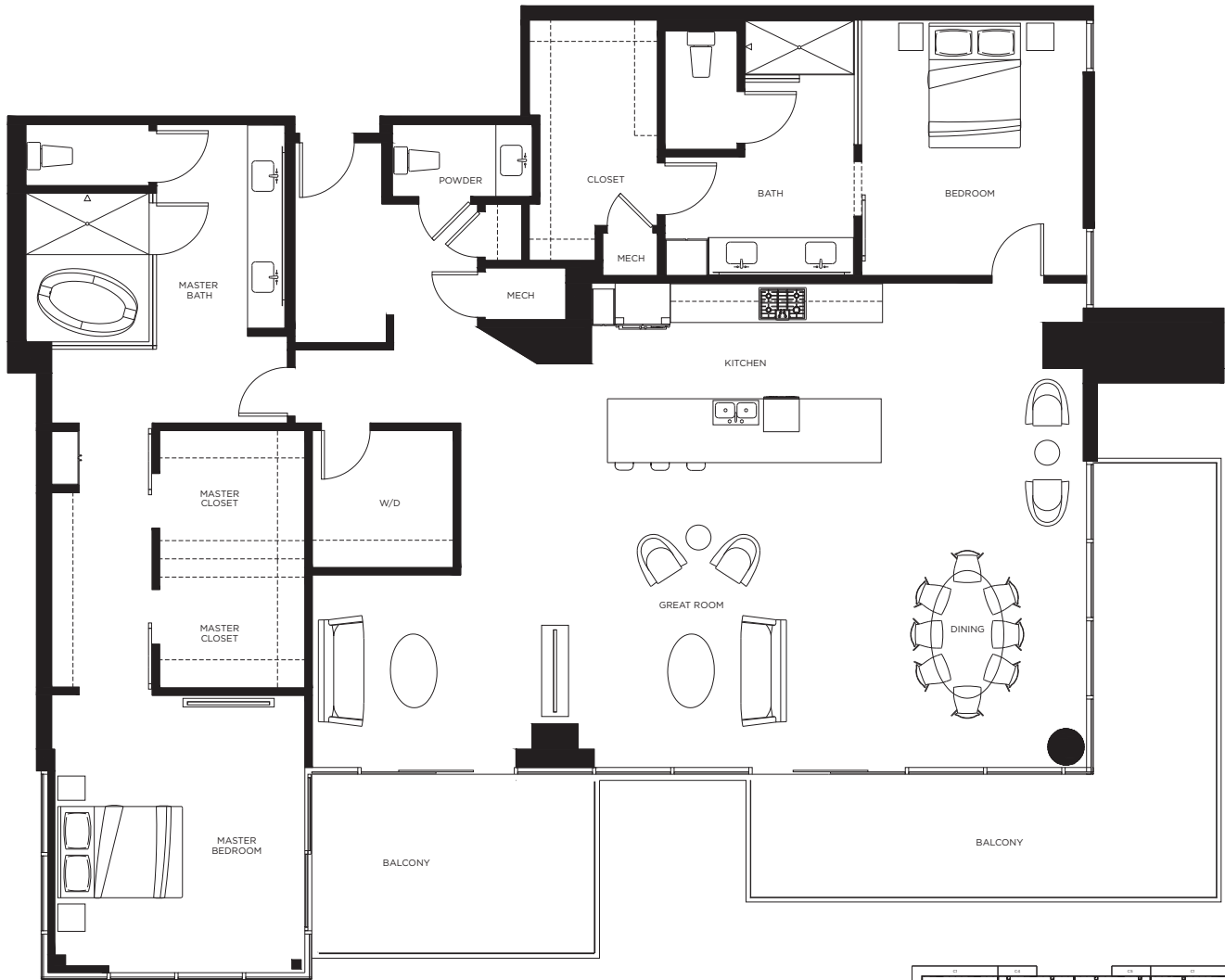


This is not an offer to sell, or solicitation of offers to buy, the property in states where such an offer of solicitation cannot be made. Sales by Phoenix Urban Spaces, LLC, Roberta Candelaria, Broker.

**deco**  
COMMUNITIES

# Lead where others follow

ENVYRESIDENCES.COM



Level 8

**ph c7**  
**2 Bed / 2.5 Bath**  
2, 441 sq. ft.

+ 157 sq. ft. & 303 sq. ft. balconies



This is not an offer to sell, or solicitation of offers to buy, the property in states where such an offer of solicitation cannot be made. Sales by Phoenix Urban Spaces, LLC, Roberta Candelaria, Broker.





Camelback Mountain

Phoenix Mountains Reserve

Mummy Mountain

The Phoenician Golf Club

Fashion Square Shopping Mall

Optima Camelview Village

Chaparral Suites

Firesky Resort and Spa

Waterfront

N Scottsdale Road

Safari Drive

W Hotel

Best Western Plus Sundial

Maya Day + Nightclub

Axis Radius Nightclub

Majerie's Sports Grill

The Mint Nightclub

El Hefe Bar

Smashboxx Club & Dollhouse Lounge

First Fidelity Bank

E Camelback Road

Retail & Office

Hotel Indigo

Don & Charlie's Steakhouse Restaurant

N Civic Center Plaza

envy SCOTTSDALE

E Indian Plaza

Retail

N 75th Street

Shopping Center (Sprouts, Farmers Market, TJ Maxx, Arby's)



Hilton Garden Inn

Marriott

Hyatt Place

Jackrabbit Lounge

Hyatt House

Wells Fargo

Howard Johnson

Giligin's

US-Bank

Shotgun Betty's

Hotel Valley Ho

Whiskey Revolver

Maloney's Tavern

Social Tap Pub

Mulligan's

DJs of Scottsdale

Parking

Galleria Corporate Center

Waterfront

W Hotel

Maya Day + Nightclub

Axis-Radius Nightclub

N Civic Center Plaza

Hotel Indigo

El Hefe Bar

Majerie's Sports Grill

Spanish Fly

American Junkie

Retail

Smashboxx Club & Dollhouse Lounge

The Mint Nightclub

N 75th Street

First Fidelity Bank

Shopping Center (Sprouts Farmers Market, TJ Maxx, Arby's)

Don & Charlie's Steakhouse Restaurant

A woman with long blonde hair, wearing a dark grey silk robe, sits on a light-colored sofa. She is holding a lit cigar in her right hand. In front of her is a coffee table with a tray of pastries and a glass of orange juice. To her right, a man with a beard, wearing a brown firefighter's jacket with reflective stripes, is reclining on the sofa, looking towards the right. The background is a dark, purple-hued wall. The text "stake your claim" is overlaid in a bright pink, handwritten-style font across the center of the image.

stake your claim